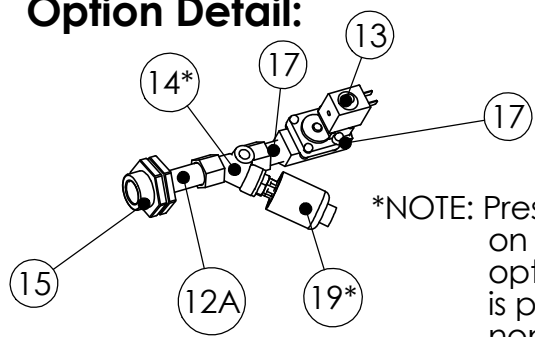
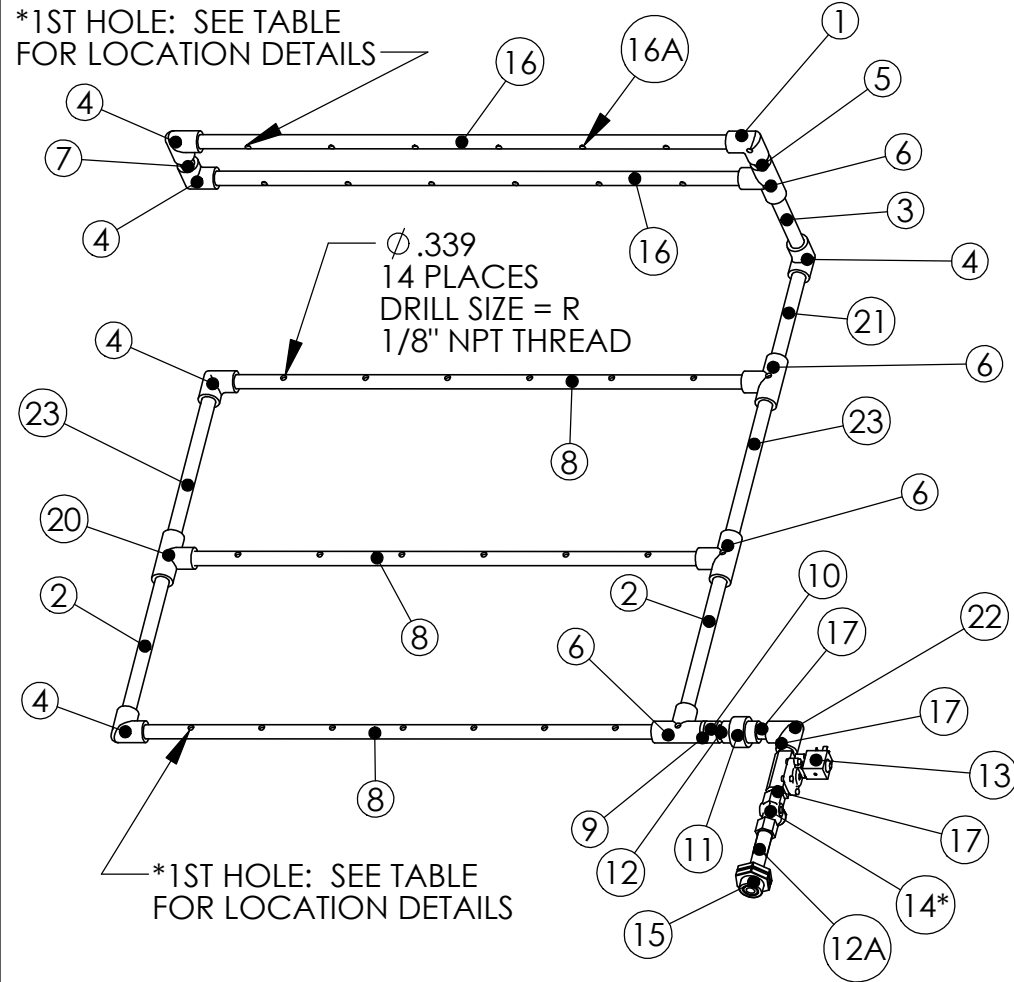


Freeze Protection Option Detail:



*NOTE: Pressure Switch is only installed on units with Freeze protection option. 1/4" connection on strainer is plugged in all standard non-freeze-protection cases.

*1ST HOLE: SEE TABLE FOR LOCATION DETAILS



Spraybar Hole Locations

| Spray Bar Type | 1st Hole* distance to end (On Center) | Hole to hole spacing (On Center) | # of Holes on bar (Not Including Elbow or Tee) |
|---------------------|---------------------------------------|----------------------------------|------------------------------------------------|
| Item # 8 - Lower SB | 3.75" | 5.0" | 6 |
| Item # 16 - Top SB | 3.75" | 5.1" | 6 |

BILL OF MATERIALS

| ITEM NUMBER | DESCRIPTION | QUANTITY |
|-------------|------------------------------------------|----------|
| 1 | 1/2" PVC SMOOTH ELBOW W/ NOZZLE HOLE | 1 |
| 2 | 1/2" X 10-3/4" SMOOTH PVC PIPE | 2 |
| 3 | 1/2 x 6" SMOOTH PVC PIPE | 1 |
| 4 | 1/2" PVC SMOOTH ELBOW | 6 |
| 5 | 1/2 X 2" SMOOTH PVC PIPE | 1 |
| 6 | 1/2" SMOOTH PVC "T" W/ NOZZLE HOLE | 4 |
| 7 | 1/2" X 2-1/4" SMOOTH PVC PIPE | 1 |
| 8 | 1/2" X 32-1/2" SMOOTH PVC PIPE | 3 |
| 8A | MEC270A W/ANTI-DRIP VALVE & NOZZLE (RED) | 21 |
| 9 | 1/2" X 1-1/2" SMOOTH PVC PIPE | 1 |
| 10 | 1/2" PVC MALE NPT X SOCKET | 1 |
| 11 | 1/2" PVC NPT UNION | 1 |
| 12 | 1/2" X 1-1/4" PVC CLOSE NPT NIPPLE | 1 |
| 12A | 1/2" X 5" NPT BRASS NIPPLE | 1 |
| 13 | L180B33Z610A 1/2" SOLENOID VALVE | 1 |
| 14* | 1/2" X 1/4" X 1/2" NPT STRAINER | 1 |
| 15 | 1/2" QUICK SEAL (32-00002) | 1 |
| 16 | 1/2" X 33-1/2" SMOOTH PVC PIPE | 2 |
| 16A | CC-213 w/CC-929 NOZZLE | 14 |
| 17 | 1/2" CLOSE NPT BRASS NIPPLE (4568K171) | 3 |
| 19* | 1/4" CONNECTION PRESSURE SWITCH (EC260) | 1 |
| 20 | 1/2" SMOOTH TEE | 1 |
| 21 | 1/2" X 7-1/4" SMOOTH PVC PIPE | 1 |
| 22 | 1/2" BRASS NPT ELBOW | 1 |
| 23 | 1/2" X 11" SMOOTH PVC PIPE | 2 |

NOTES:

Max. Water Pressure: 50 psi. @ 70°F

Max. Water Temperature: 125°F

Max. Water Flow Rate: 10.15 GPH

Max. Recommended Water Hardness <1 GPG or <17 ppm

Material: N/A
Blank Size: N/A x N/A
Weight: N/A lbs

Part Number: N/A
MACOLA/AX Number: N/A
Drawing Name: EC 4 Tubing Assembly
Drawn By: BRH
Parent Assembly: EC 4
Sheet: 2 of 2

Unless Otherwise Specified
Dimensions are in Inches.

Standard Tolerances are:
Fractions: ±1/16
Decimal: .XX±.05
.XXX±.015
Angles: ±1°

CONFIDENTIAL